

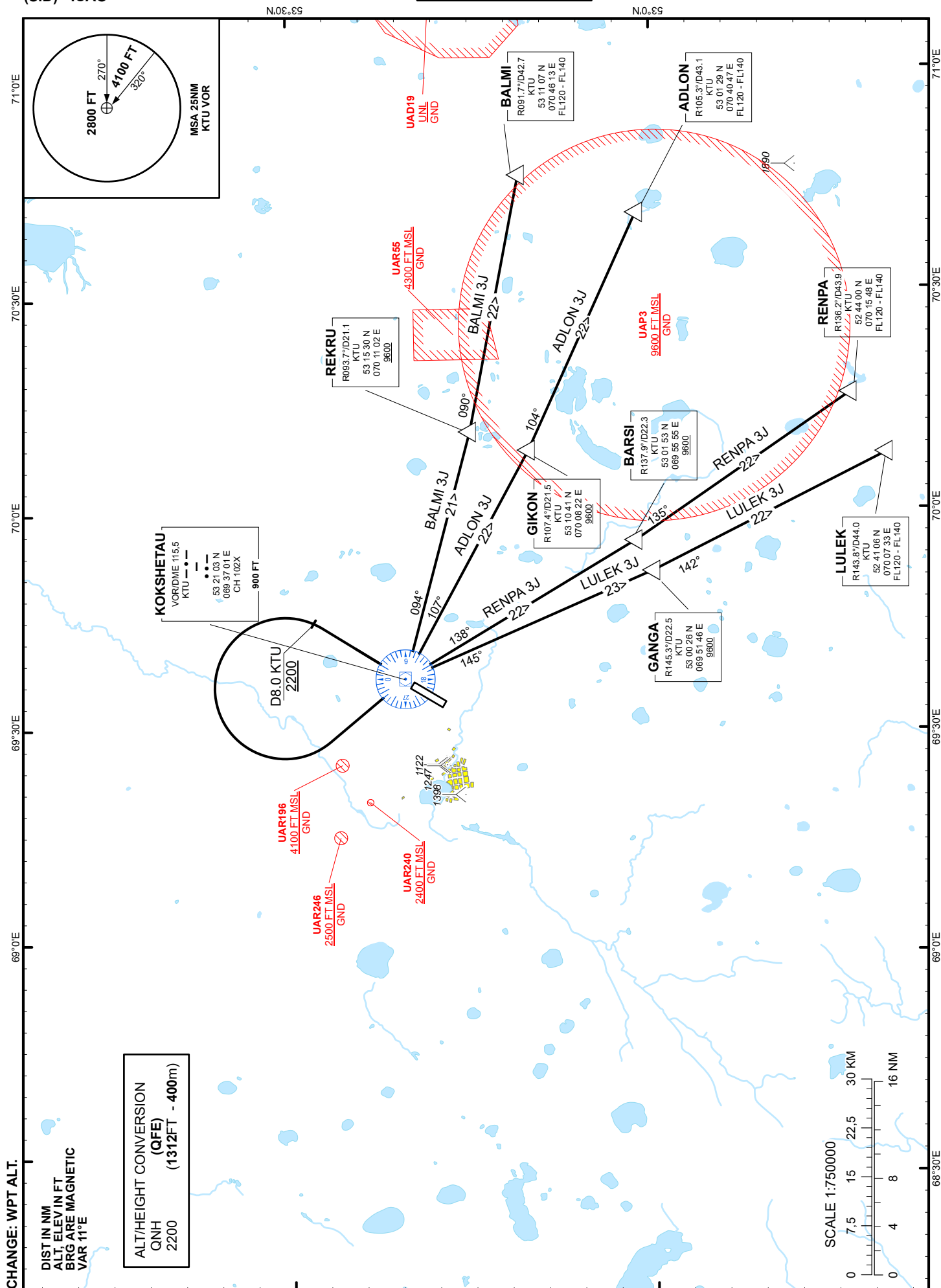
STANDARD DEPARTURE
CHART - INSTRUMENT
(SID) - ICAO

TRANSITION ALTITUDE
10000 FT

KOKSHETAU TOWER 127.9
KOKSHETAU ATIS (EN) 134.9
KOKSHETAU ATIS (RU) 126.0

ADLON 3J, BALMI 3J,
LULEK 3J, RENPA 3J.

KOKSHETAU
RWY 02



STANDARD INSTRUMENT DEPARTURE ROUTES (SID) KOKSHETAU RWY 02

BALMI 3J

After take-off climb straight ahead to 2200 or above. At D8.0 KTU, turn LEFT to KTU, after crossing KTU proceed on track 094° to REKRU (R093.7° D21.1 KTU). After crossing REKRU turn LEFT on track 090° to BALMI (R091.7° D42.7 KTU).

Cross REKRU at 9600FT or above.

Cross BALMI at FL120-FL140.

ADLON 3J

After take-off climb straight ahead to 2200 or above. At D8.0 KTU, turn LEFT to KTU, after crossing KTU proceed on track 107° to GIKON (R107.4° D21.5 KTU). After crossing GIKON turn LEFT on track 104° to ADLON (R105.3° D43.1 KTU).

Cross GIKON at 9600FT or above.

Cross ADLON at FL120-FL140.

RENPA 3J

After take-off climb straight ahead to 2200 or above. At D8.0 KTU, turn LEFT to KTU, after crossing KTU proceed on track 138° to BARSI (R137.9° D22.3 KTU). After crossing BARSI turn LEFT on track 135° to RENPA (R136.2° D43.9 KTU).

Cross BARSI at 9600FT or above.

Cross RENPA at FL120-FL140.

LULEK 3J

After take-off climb straight ahead to 2200 or above. At D8.0 KTU, turn LEFT to KTU, after crossing KTU proceed on track 145° to GANGA (R145.3° D22.5 KTU). After crossing GANGA turn LEFT on track 142° to LULEK (R143.8° D44.0 KTU).

Cross GANGA at 9600FT or above.

Cross LULEK at FL120-FL140.